



WHY DEALERS CHOOSE SURECALL

Since 2001, SureCall has been the first-to-market pioneer of innovative signal boosters that improve cellular service inside homes, offices and commercial spaces across North America.

BEST PERFORMANCE

We engineer our boosters to meet specific customer needs. No matter what issue your customer may be having, we have a solution just for them that will offer more call, text, and data connecting power than any other.

TOP-TIER RELIABILITY

Rather than boosting profitability with plastic components and stripped-down control boards, all SureCall products use top-quality metals and control board components that are built to last and sure to perform long into the future.

INNOVATION LEADER

Our engineers have patented and developed the industry's leading technologies. No matter the future of cellular, SureCall's award-winning innovations will reconnect disconnected cellular customers in their homes, at the office, and on the road.

WE GUARANTEE SATISFACTION

We are dedicated to creating happy, connected customers and partners who have all the tools they need to succeed. All SureCall products come with our industry-leading customer satisfaction suite, which includes 24/7 US-based tech support, a 3-year Warranty, and 60-day money-back guarantee.

CERTIFIED INSTALLER PROGRAM



LEVEL 1 *Our professional training and certification features an in-depth look at SureCall's line of products and how to accurately design, propose and install signal booster systems for optimal performance.*

Held weekly, our live training webinars will teach you how to promote and install the applicable SureCall product set based on your customer's needs.

- Best practices for site surveys
- Product overview and installation
- Deployment and optimization
- Determining the best solution

REGISTER NOW



LEVEL 2 *Level 2 training that takes a deeper dive into our residential and commercial booster systems. Learn best practices for diagnosing the system, how to design systems more efficiently and much more. ***Level 2 training is available to those who have completed Level 1****

- System testing and diagnosing issues
- Diversifying sectors
- Advanced layout techniques
- Asymmetrical gain

Level 2 Certified Installers also have the opportunity to join our priority lead referral program, test product demos and provide feedback, additional marketing opportunities, and receive a welcome packet with Swag Bag.

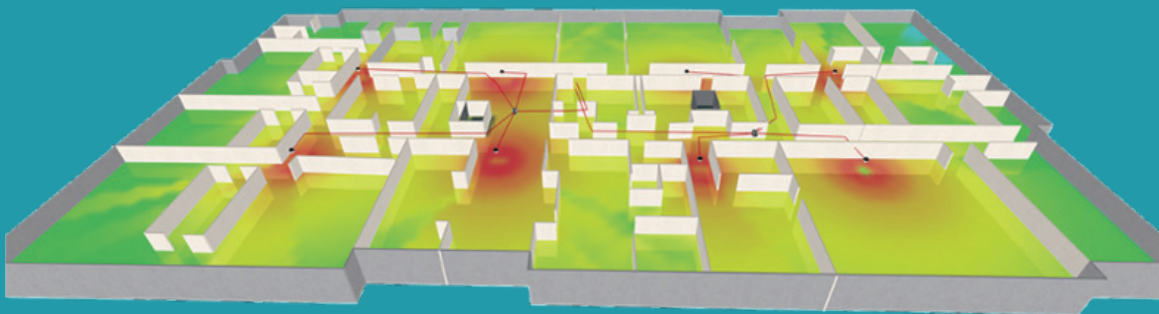
REGISTER NOW

FREE SYSTEM DESIGNS

SureCall offers FREE systems design configurations for projects over 10K sq. ft. with multiple indoor antennas. Our system design specialists will optimize antenna placement for best performance and indoor coverage using your site survey and floor plans. Submit your site survey findings, RF signal readings and floor plans and we'll develop a comprehensive configuration diagram, design layout and BOM that will be emailed to you directly.

IBWAVE DESIGNS

SureCall offers iBwave designs for buildings over 10K sq ft with multiple indoor antennas. Our iBwave certified network designers will ensure that you and your customer get top-tier performance from your signal booster configuration. iBwave's *Prediction Mapping* allows you to see exactly how the coverage will flow throughout the building, so you'll know what the system will deliver even before it has been installed.



[SUBMIT SITE SURVEY](#)

CASE STUDIES

Our large library of case studies help to illustrate successful installations, add instant credibility and are an excellent trust symbol that can be forwarded along to customers. Feel free to send along links to individual studies or download/print PDF versions from each case study page.



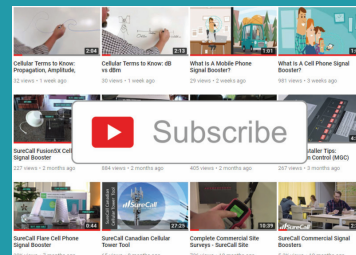
WIN MORE BUSINESS

Case studies give you a great piece of marketing proof to win future business. We're always looking for unique install testimonials and our PR and content team can document the story, pitch to media, and gives you full access to use the study for any of your own marketing efforts.

[VIEW CASE STUDIES](#)

VIDEO CHANNEL

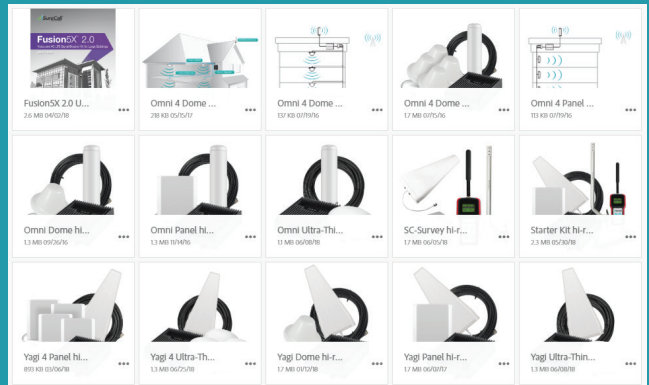
Stay up-to-date with our newest products, products training videos, industry trends, helpful tips and tricks, SureCall news and more by subscribing to our dedicated YouTube channel.



[SUBSCRIBE NOW](#)

DIGITAL ASSETS

Download all hi-res product images, install diagrams, kitting images, retail package images, product literature and more from our dedicated cloud drive. Identical web-optimized product images are available and formatted specifically for web store product catalogs.



DIGITAL ASSETS

DATA SHEETS & USER GUIDES

Increase your product knowledge and educate your customers about signal boosters, antennas, cables, connectors, install tools and more. Corresponding data sheets with installation instructions for each accessory are also included on our product pages for viewing and downloading in PDF format.



ACCESS LITERATURE

PRODUCT CATALOG

Explore our full product line of signal boosters, antennas and accessories, including our newest award-winning signal boosters designed for homes, commercial spaces and public safety.

[VIEW CATALOG](#)



ADDITIONAL RESOURCES

Familiarize yourself with all things SureCall. Stay current and get the latest news about SureCall and our industry-leading signal boosters.

GET SOCIAL

Follow us on [Facebook](#), [Twitter](#), [LinkedIn](#) and [Google+](#).



[COMPREHENSIVE BOOSTER GUIDE](#)

[SURECALL BLOG](#)



[SURECALL IN THE NEWS](#)



Contact SnapAV

EMAIL

sales@snapav.com

PHONE

(866) 424-4489

WEB

www.SnapAV.com

ADDRESS

SnapAV
1800 Continental Blvd
Suite # 200
Charlotte, NC 28273

OFFICE HOURS

8:00 am - 8:00 pm EST
Monday - Friday



CONTACT SURECALL

EMAIL

support@surecall.com

PHONE

(888) 365-6283

WEB

www.SureCall.com

ADDRESS

SureCall
48346 Milmont Dr
Fremont, CA 94538
USA

OFFICE HOURS

7:00 am - 5:00 pm PST
Monday - Friday