

**Partner: SnapAV**  
**Model: Visualint IP Camera**  
**Device Type: Streaming**

**GENERAL INFORMATION**

<b>SIMPLWINDOWS NAME:</b>	Visualint IP Camera v1.7
<b>CATEGORY:</b>	Cameras
<b>VERSION:</b>	V1.7
<b>SUMMARY:</b>	This module controls a Visualint IP Camera via TCP Connection.
<b>GENERAL NOTES:</b>	This module was designed and tested with VIM-1350/1450 and VIM-7230 IP Cameras using a TSW-1050 touch panel.
<b>CRESTRON HARDWARE REQUIRED:</b>	2 or 3 Series processor
<b>SETUP OF CRESTRON HARDWARE:</b>	None
<b>VENDOR FIRMWARE:</b>	N/A
<b>VENDOR SETUP:</b>	<p>The IP Address of the Visualint IP Camera must be entered before continuing.</p> <p><u>CREDENTIALS</u></p> <p>If using kernel version 20160918 or prior, please use the hard coded admin/1111 username/password. If the kernel version is newer, please enter the admin username and associated password from the web UI.</p> <p><u>URL PATH EXAMPLES</u></p> <p>MJPEG: <code>http://&lt;username&gt;:&lt;password&gt;@&lt;ip address&gt;:&lt;control port&gt;/ISAPI/MjpegStream/1/&lt;stream id&gt;</code></p> <p>RTSP/H264: <code>rtsp://&lt;username&gt;:&lt;password&gt;@&lt;ip address&gt;:&lt;rtsp port&gt;/1/&lt;stream id&gt;</code></p> <p>SNAPSHOT: <code>http://&lt;ip address&gt;:&lt;control port&gt;/snapshot.jpg</code></p> <p><i>Note: The Visualint IP Camera Module provides the snapshot image and RTSP/H264 URLs as a Serial Outputs. Currently, the MJPEG streams are not supported on Crestron Panels. The H264 should be configured no higher than 720p resolution.</i></p>
<b>CABLE DIAGRAM:</b>	N/A

**Partner: SnapAV**  
**Model: Visualint IP Camera**  
**Device Type: Streaming**


**CONTROL:**

PTZ_UP	D	Moves camera up until released.
PTZ_DOWN	D	Moves camera down until released.
PTZ_LEFT	D	Moves camera left until released.
PTZ_RIGHT	D	Moves camera right until released.
PTZ_STOP	D	Stops all PTZ commands.
PTZ_LEFTUP	D	Moves camera up and to the left until released.
PTZ_RIGHTUP	D	Moves camera up and to the right until released.
PTZ_LEFTDOWN	D	Moves camera down and to the left until released.
PTZ_RIGHTDOWN	D	Moves camera down and to the right until released.
PTZ_ZOOMIN	D	Zooms the camera in until released.
PTZ_ZOOMOUT	D	Zooms the camera out until released.
MOTIONSERVERSTART	D	Starts server to listen for motion events.
MOTIONSERVERSTOP	D	Stops server from listening for motion events.
AUDIO_ENABLE	D	Enables the camera's audio.
AUDIO_DISABLE	D	Disables the camera's audio.
PTZ_TRIGGER_PRESET	D	Triggers the preset selected with PTZ_PRESET.
PTZ_TRIGGER_SCENE	D	Triggers the scene selected with PTZ_SCENE.
OUTPUT_ENABLE	D	Enables the output selected with OUTPUT_ID.
OUTPUT_DISABLE	D	Disables the output selected with OUTPUT_ID.
VCA_EVENT_ENABLE	D	Enables the VCA Event defined by VCA_STREAM_ID, VCA_RULE_ID, and VCA_SCENE_ID.
VCA_EVENT_DISABLE	D	Disables the VCA Event defined by VCA_STREAM_ID, VCA_RULE_ID, and VCA_SCENE_ID.

**Partner: SnapAV**  
**Model: Visualint IP Camera**  
**Device Type: Streaming**



STREAM_ENABLE	D	Enables the stream.
STREAM_DISABLE	D	Disables the stream.
PTZ_PRESET	A	Defines the PTZ preset to trigger with PTZ_TRIGGER_PRESET.
PTZ_SCENE	A	Defines the PTZ scene to trigger with PTZ_TRIGGER_SCENE.
OUTPUT_ID	A	Defines the ID of the output to enable/disable with OUTPUT_ENABLE/DISABLE.
VCA_STREAM_ID	A	Defines the stream ID of the VCA Event to enable/disable with VCA_EVENT_ENABLE/DISABLE. All three VCA Analog Inputs must be defined.
VCA_RULE_ID	A	Defines the rule ID of the VCA Event to enable/disable with VCA_EVENT_ENABLE/DISABLE. All three VCA Analog Inputs must be defined.
VCA_SCENE_ID	A	Defines the scene ID of the VCA Event to enable/disable with VCA_EVENT_ENABLE/DISABLE. All three VCA Analog Inputs must be defined.
CANCEL_ALL_EMAILS	D	This command will cancel all pending emails and purge from memory.
SMTP_SERVER	A	Defines the server id used for enabling and disabling SMTP SERVER. Range is 1-2.
SMTP_SERVER_DISABLE	D	Disables SMTP server currently selected by SMTP_SERVER.
SMTP_SERVER_ENABLE	D	Enables SMTP server currently selected by SMTP_SERVER.
SMTP_TIME_DELAY	A	Defines the time value for SMTP notifications. Holds all VCA notifications until the time has expired. Ranges from 0 – 300.
SMTP_MAIL_SERVER_ENABLE	D	Enables SMTP Mail Server with the currently selected SMTP_TIME_DELAY.
SMTP_MAIL_SERVER_DISABLE	D	Disables SMTP Mail Server with the currently selected SMTP_TIME_DELAY.

**FEEDBACK:**

MOTION[10]	D	Goes high for 5 seconds when motion event x is triggered. See motion section for more details.
------------	---	--

**Partner: SnapAV**  
**Model: Visualint IP Camera**  
**Device Type: Streaming**



MOTION_CUSTOM	D	Goes high for 5 seconds when motion event custom is triggered.
URL_IMAGE	S	The path of the snapshot image for the camera.
URL_MJPEG_STREAM_1	S	The path of the Mjpeg Stream 1 for the camera.
URL_MJPEG_STREAM_2	S	The path of the Mjpeg Stream 2 for the camera.
URL_MJPEG_STREAM_3	S	The path of the Mjpeg Stream 3 for the camera.
URL_H264_STREAM	S	The path of the RTSP/H264 stream for the camera.

**PARAMETER:**

CAMERA_IP	S	The IP Address of the camera.
USERNAME	S	The username for control of the camera. (Default: admin)
PASSWORD	S	The password for control of the camera. (Default: 1111)
CONTROL_PORT	D	The port used to access the UI of the camera. (Default: 8090)
H254_PORT	D	The H264/RTSP port for the selected stream. (Default: 554)
STREAM_ID	D	The ID of the stream from the camera to use for the H264/RTSP serial output. (Default: 3) (NOTE: The stream should be configured for H264 and no higher than 720p resolution.)

**TESTING:**

OPS USED FOR TESTING:	RMC3 1.010.0060
SIMPL WINDOWS USED FOR TESTING:	4.09.04
DEVICE DB USED FOR TESTING:	90.02.001.00
CRES DB USED FOR TESTING:	65.05.004.00
SYMBOL LIBRARY USED FOR TESTING:	1049
SAMPLE PROGRAM:	Visualint IP Camera Demo
REVISION HISTORY:	V1.7 – Added support for SMTP Mail Server, Cancel All Emails, and SMTP Server.

**Partner: SnapAV**  
**Model: Visualint IP Camera**  
**Device Type: Streaming**



Updated documentation explaining motion events.

V1.6 – Removed Streams 2-3 enable/disable

V1.5 – Fixed VCA Events

V1.4 – Added mjpeg streams

V1.3 – Added motion event handling

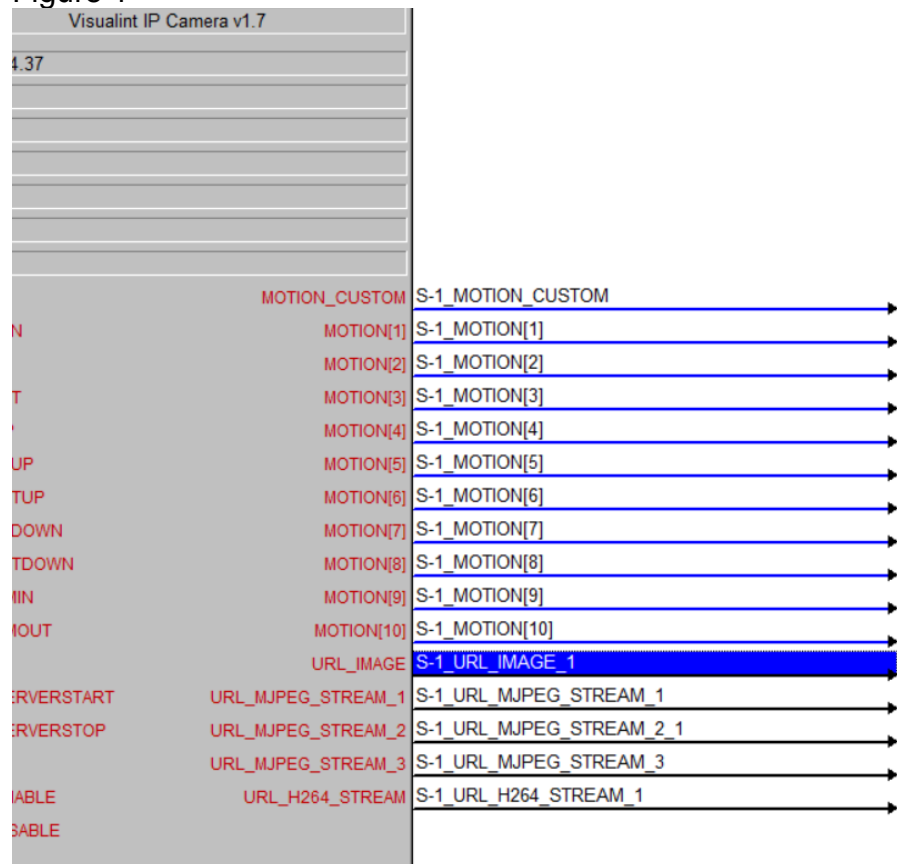
V1.2 – Documentation Update

V1.1 – Added Adjustable User/Pass, Control Port, and H264 Stream

V1.0 – Original Release

**MOTION:**

Figure 1



**Partner: SnapAV**  
**Model: Visualint IP Camera**  
**Device Type: Streaming**



Figure 2

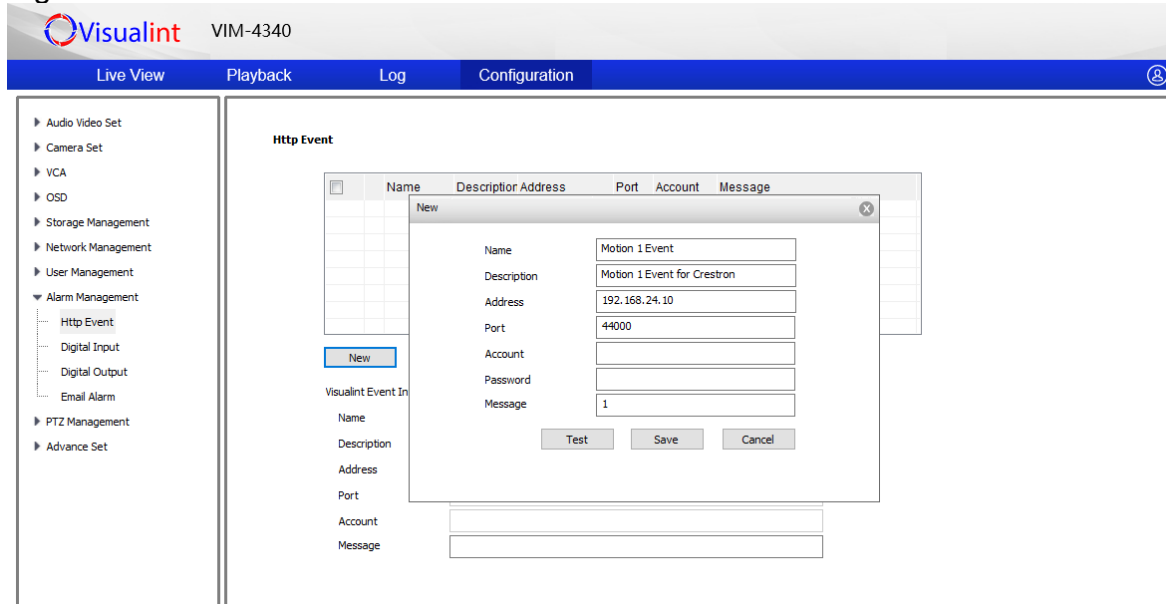


Figure 3

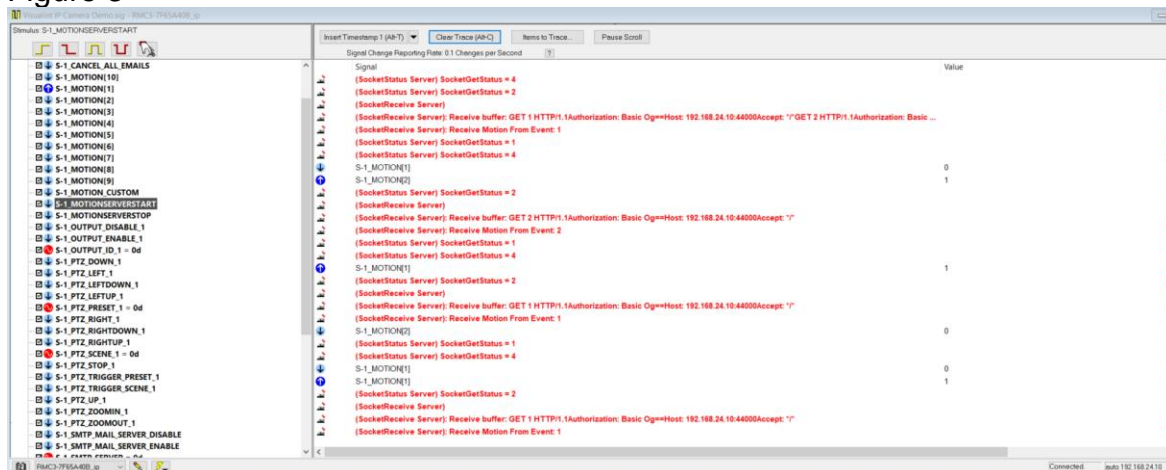


Figure 1. Expanded the motion digital output for the number of events required. Maximum is 10 with one custom one.

Figure 2. Example of how to test the programming from the local user interface of the Visualint camera. This setting can be found in the Alarm Management tab under HTTP Events. Please note that the message field box must correspond to 1-10. Anything else will trigger the custom motion digital output.

Figure 3. Example of Toolbox software showing the digital output for motion 1 going high momentarily when pressing the test button.