

## Elan Driver Release Notes

### 08 Jan 18

A dedicated Luma IP camera driver for use with an Elan control system is still in development. In the meantime, a navigation driver can be found on the Luma recorder product pages. Alternatively, you can use the steps at the end of this document to add your cameras to an Elan system.

#### Features Added

The navigation driver supports:

- Privacy masks
- Navigation control
- PTZ camera control

You can enable and disable the following for each channel:

- Send motion email notification
- Send alarm email notification
- Record schedule

#### Known Limitations

There is no support for IP camera streaming through the PoE port of the NVR.

With g! v.7.0, remotely viewing streams can only be done at low resolution (this is fixed with v.8.0).

### 14 Aug 17

A dedicated Luma IP camera driver for use with an Elan control system is still in development. In the meantime, use the steps below to add your cameras to an Elan system.

#### Required Customization

Put the cameras on a separate switch and set them to use the ONVIF profile (unfortunately, the ONVIF profile does not allow you to specify the RTSP port, thus using ONVIF also requires using a separate switch). Ensure the cameras are using H.264 for their main stream and MJPEG for their substream.

Customize all desired camera settings properly before adding them to the Elan control system. Once the cameras are attached to the Elan system, settings made through Elan will not propagate down to the cameras.

Once all cameras are ready, discover them through the network.

#### Recommended Settings

Luma IP camera settings and Elan settings should match these:

Main Stream:

- Format: H264
- Framerate: 15
- Bitrate: 2048

Secondary Stream:

- Format: MJPEG
- Framerate: 15
- Bitrate: 1024

### Important Note

Please ensure the sub stream on your control system is set to 6 frames per second or higher. Some control systems treat a stream with lower frame rates as if it were an image.

### Features Added

Support of JPEG/MJPEG streaming on an external switch via ONVIF.

### Known Limitations

There is no support for IP camera streaming through the PoE port of the NVR.

With g! v.7.0, remotely viewing streams can only be done at low resolution (this is fixed with v.8.0).

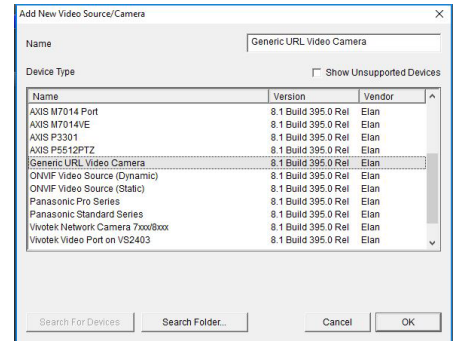
## Setting Up

This outlines how to set up and pull streams from cameras connected to a Luma NVR via its POE ports. In this typical configuration, the cameras are on a different subnet to keep LAN traffic to a minimum. Because the Elan controller is on a different subnet from the cameras, it cannot directly access the camera streams. However, by using specific settings for the cameras, NVR, and the Elan controller, the camera streams can be accessed.

These instructions are explicitly for Luma NVRs. They do not work with the DVR as the DVR has a custom driver. They also have not been tested with Wirepath models.

Configure the NVR and cameras as shown on the previous page. Ensure you have the following data handy:

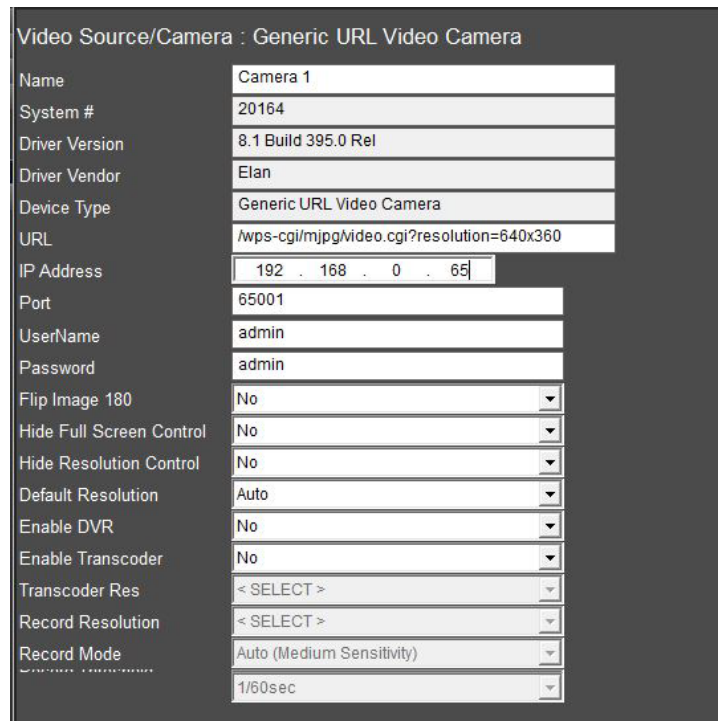
- The NVR’s IP address
- The NVR’s Login Credentials
- The Camera’s Login Credentials



### Load the Streams via the Generic URL Video Driver

1. From the video tab, click Add New Video Source/Camera.
2. From the list, select “Generic URL Video Camera” and press OK.
3. In the IP Address box, enter the address of the NVR.
4. Under UserName and Password, use the credentials of the camera.
5. For the URL, Enter the following: [/wps-cgi/mjpg/video.cgi?resolution=640x360](#)
6. For the port number, enter the following that corresponds to the camera:
  - Camera 1 = 65001
  - Camera 2 = 65002
  - Camera 3 = 65003
  - Camera 4 = 65004
  - Etc.

7. Configure the rest of the settings as desired. Your dialog should end looking like this:



### Common Mistakes

If it doesn’t work, check for the following:

- Incorrect URL
- Incorrect login credentials
- Incorrect second stream format; it must be set to MJPEG

If you need further assistance setting up your Elan system, please reach out to Elan’s dealer support.