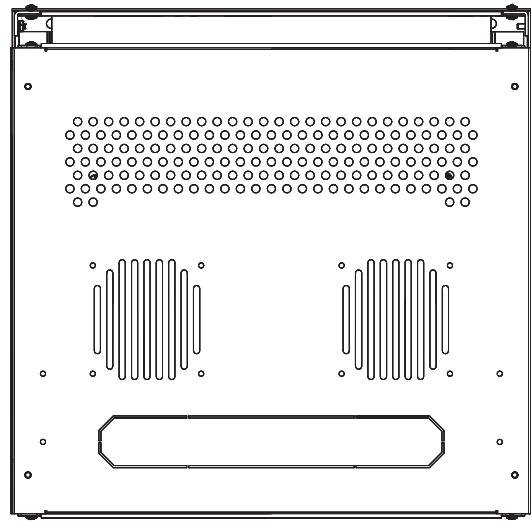
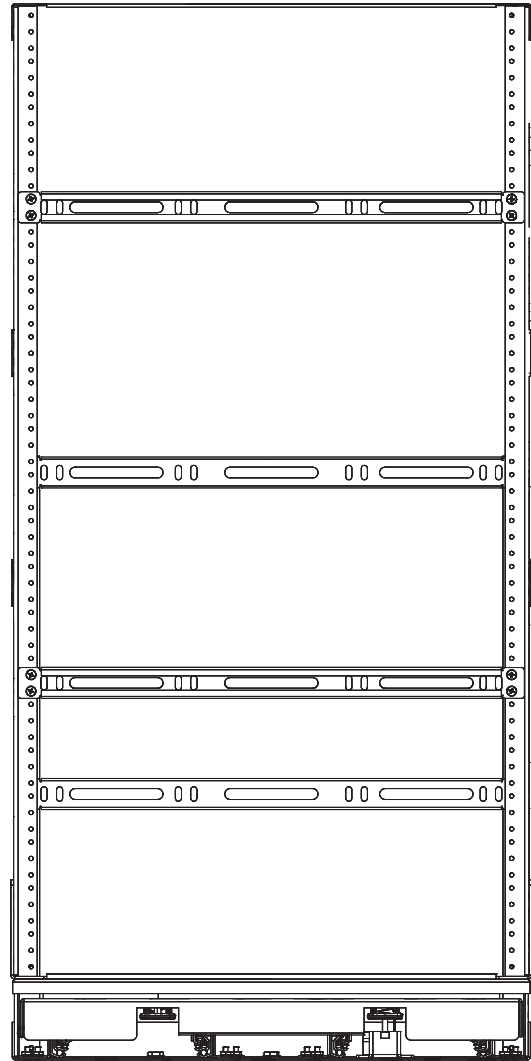


In-Cabinet Slide-Out Rack

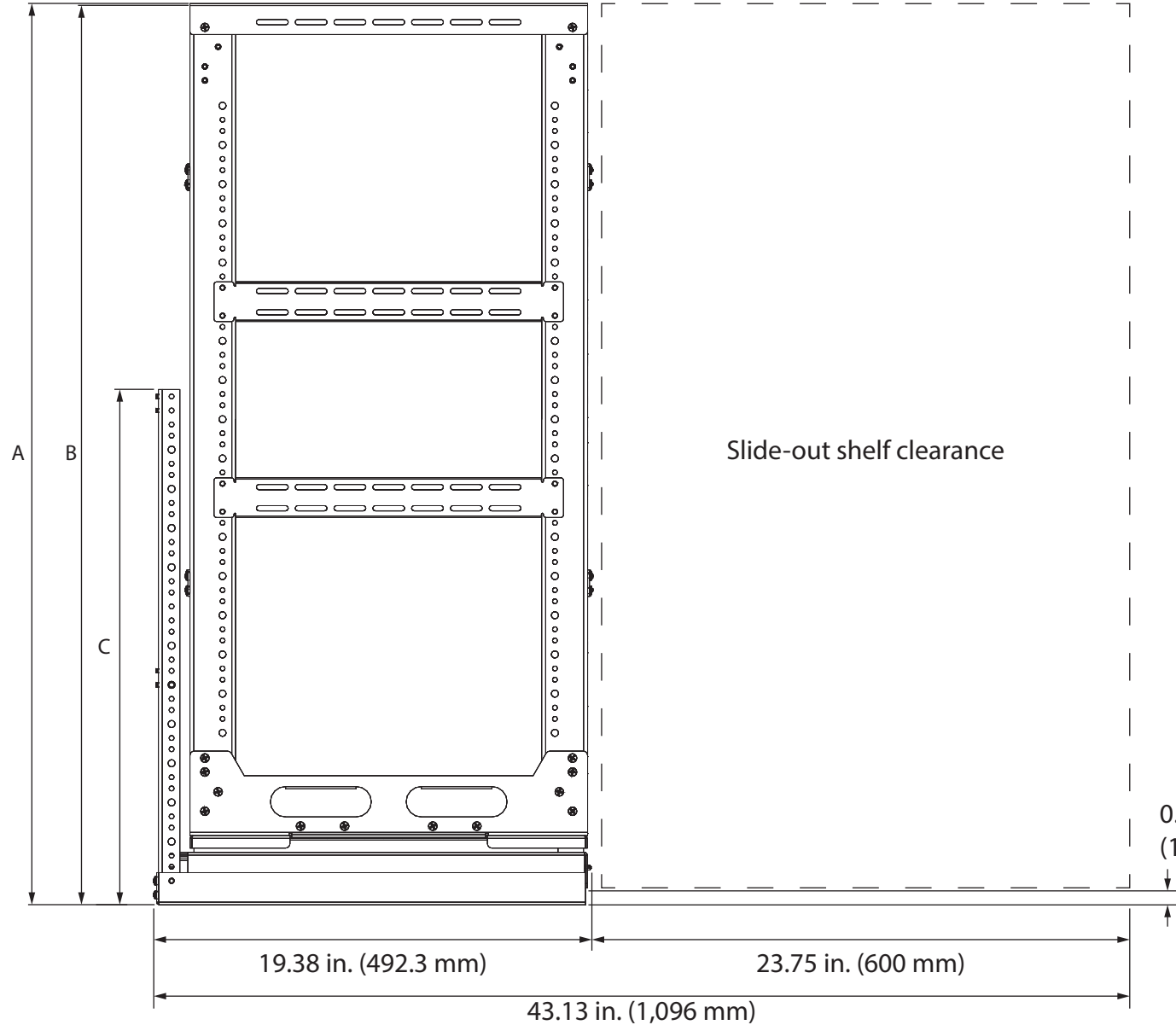
Top View



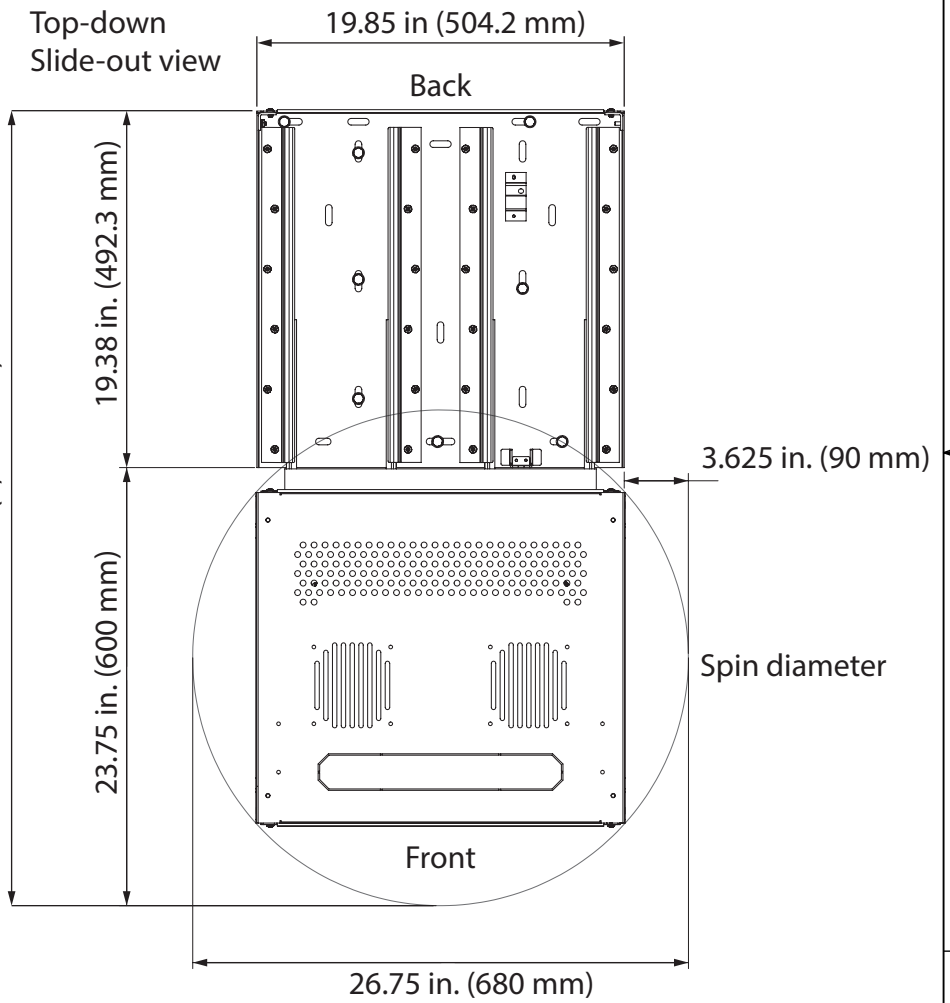
Front View



Side View



Units	A - Height with Top	B - Height without Top	Wire Mgmt. Size	C - Wire Mgmt. Actual Height
8U	17.48 in. (444.0 mm)	17.42 in. (442.5 mm)	18 in.	17.76 in. (451.1 mm)
10U	20.98 in. (532.9 mm)	20.92 in. (531.4 mm)		
12U	24.48 in. (621.8 mm)	24.42 in. (620.3 mm)		
14U	27.98 in. (710.7 mm)	27.92 in. (709.2 mm)		
16U	31.48 in. (799.6 mm)	31.42 in. (798.1 mm)	24 in.	23.00 in. (584.2 mm)
18U	34.98 in. (888.5 mm)	34.92 in. (887.0 mm)		
21U	40.23 in. (1021.8 mm)	40.17 in. (1020.3 mm)		
24U	45.48 in. (1155.2 mm)	45.42 in. (1153.7 mm)	36 in.	35.26 in. (895.6 mm)
28U	52.48 in. (1333.0 mm)	52.42 in. (1331.5 mm)		
30U	55.98 in. (1421.9 mm)	55.92 in. (1420.4 mm)		
35U	64.73 in. (1644.1 mm)	64.67 in. (1642.6 mm)		
42U	76.98 in. (1955.3 mm)	76.92 in. (1953.8 mm)		

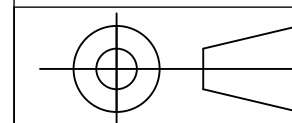


CUSTOMER PRINT



PROPRIETARY AND CONFIDENTIAL

THE INFORMATION CONTAINED IN THIS DRAWING IS THE SOLE PROPERTY OF STRONG MOUNTS AND LIFTS. ANY REPRODUCTION IN PART OR AS A WHOLE WITHOUT THE WRITTEN PERMISSION OF STRONG ONE IS PROHIBITED.



SIZE B	DRAWING NUMBER SR-CAB-SLIDE	DWG REV A
DO NOT SCALE DRAWING		SHEET 1 of 1